



7 Mayes Drive, Willow Park, Nottinghamshire | Guide Price £195,000

A superb, brand new 2-bedroom, fully furnished Prestige Homeseeker park home offering contemporary living within the picturesque Willow Park.



Property Features

- ◇ Open plan kitchen/diner complete with fully integrated appliances
- ◇ Separate utility room with back door leading to garden
- ◇ Generous lounge with electric log burner and French doors leading outside to the decking area and garden
- ◇ Large master suite with walk-through wardrobes and en-suite shower room
- ◇ Double second bedroom with fitted wardrobes
- ◇ Modern bathroom with shower bath and vanity unit
- ◇ Study with fitted furniture
- ◇ Driveway parking for two cars
- ◇ CanExel exterior cladding for easy maintenance
- ◇ Gas central heating

Location

Willow Park is located in Calverton, which is conveniently situated between Nottingham, Mansfield and the market town of Newark-upon-Trent, offering a wealth of history and museums including its impressive 12th century castle. Sitting between a beautiful golf course and stunning British countryside, the Park provides the perfect environment to live or retire for people over 45. The village has all the amenities required as well as several pubs and restaurants. Nottingham city centre is only 10 miles away with a regular bus service stopping right outside the park.





Utilities

Council Tax: Band A
(Gedling Borough Council)

Pitch Fee: £140.89 p/month (2019/20)

Gas: Calor LPG
Each home is installed with a tank

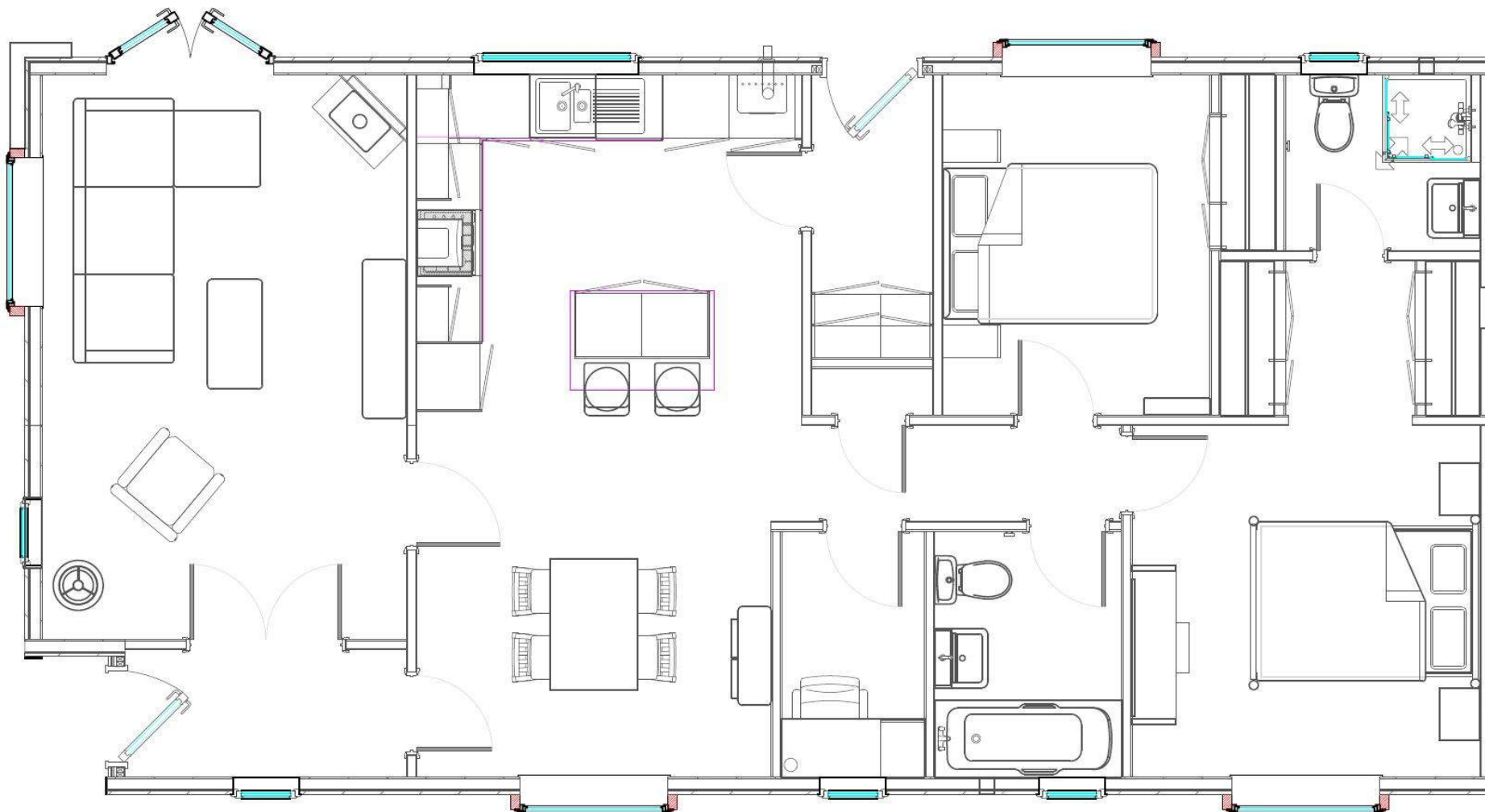
Water: All homes are metered by Killarney Homes and billed to residents biannually

Electric: Homes are metered by Killarney Homes and billed to residents quarterly

FLOORPLAN

PRESTIGE HOMESEKER AVANTI 44 x 22

INTERNAL AREA = 968 ft² / 89 m²



Further details can be found online at www.killarneyhomes.co.uk

To arrange a viewing please contact us on 0115 9652426 or email sales@killarneyhomes.co.uk